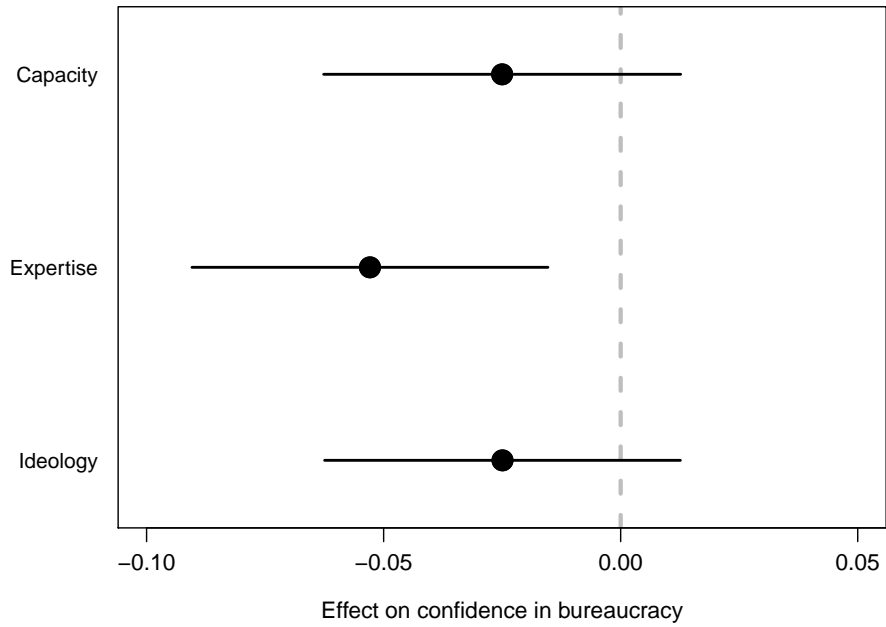


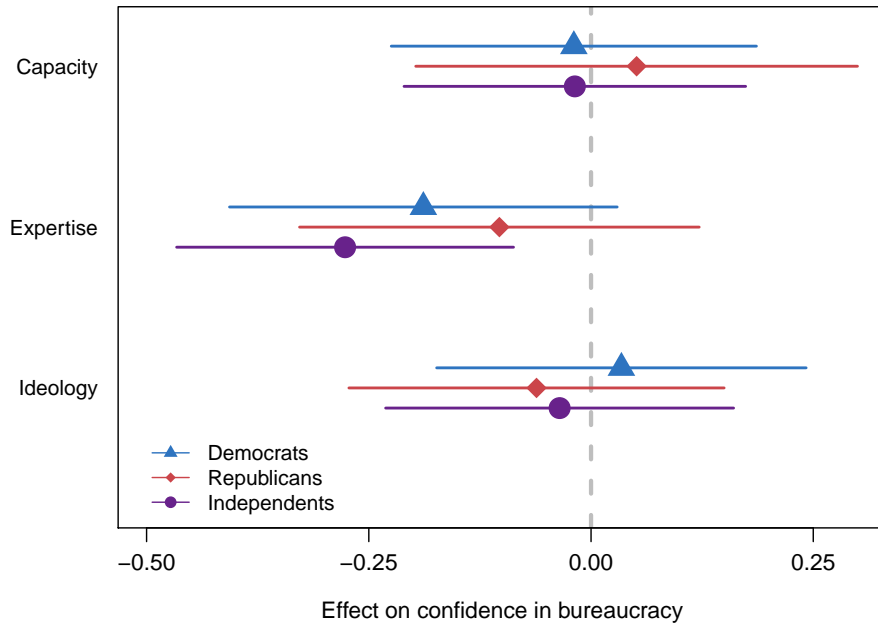
Robustness Checks and Supplementary Analyses for  
*The Administrative Presidency and Public Trust in Bureaucracy*

**Figure A.1:** Presidential Management and Confidence in Bureaucracy (Binary outcome)



*Note:* The points represent the differences in mean evaluations of bureaucracy between the control group and each of the treatment groups. The horizontal lines are the 95 percent confidence intervals associated with the differences and the vertical dashed line represents the null hypothesis of no difference in means.

**Figure A.2:** Presidential Management and Confidence in Bureaucracy: Variation by Partisanship



*Note:* The points represent the differences in mean evaluations of bureaucracy between the control group and each of the treatment groups. The horizontal lines are the 95 percent confidence intervals associated with the differences and the vertical dashed line represents the null hypothesis of no difference in means.

**Table A.1:** Regression estimates

	(1)	(2)	(3)
Capacity	-0.004 (0.063)	0.001 (0.060)	-0.018 (0.098)
Expertise	-0.208* (0.062)	-0.209* (0.060)	-0.277* (0.096)
Ideology	-0.020 (0.061)	-0.007 (0.059)	-0.035 (0.100)
Democrat			0.121 (0.109)
Republican			0.197 (0.113)
Capacity × Democrat			-0.001 (0.143)
Expertise × Democrat			0.088 (0.147)
Ideology × Democrat			0.070 (0.146)
Capacity × Republican			0.070 (0.160)
Expertise × Republican			0.174 (0.149)
Ideology × Republican			-0.026 (0.147)
(Constant)	2.817* (0.046)	-7.171* (2.520)	2.729* (0.076)
Observations	3,977	3,977	3,977
Controls		✓	

Standard errors are in parentheses. \*  $p < 0.05$ .

Dependent variable is respondent confidence in the department.

Controls include age, race/ethnicity, gender, income, education, partisanship, and symbolic ideology.

**Table A.2:** Regression estimates

	(1)
Capacity	0.002 (0.114)
Expertise	-0.146 (0.115)
Ideology	0.022 (0.112)
State	0.480* (0.112)
Interior	0.364* (0.106)
Capacity × State	-0.067 (0.154)
Expertise × State	-0.122 (0.160)
Ideology × State	-0.109 (0.157)
Capacity × Interior	-0.006 (0.154)
Expertise × Interior	-0.092 (0.147)
Ideology × Interior	-0.069 (0.141)
(Constant)	2.545* (0.086)
Observations	3,977

Standard errors are in parentheses. \*  $p < 0.05$ .

Dependent variable is respondent confidence in the department.