

Online Appendix to The Grapes of Path Dependence: The Long-Run Political Impact of the Dust Bowl Migration*

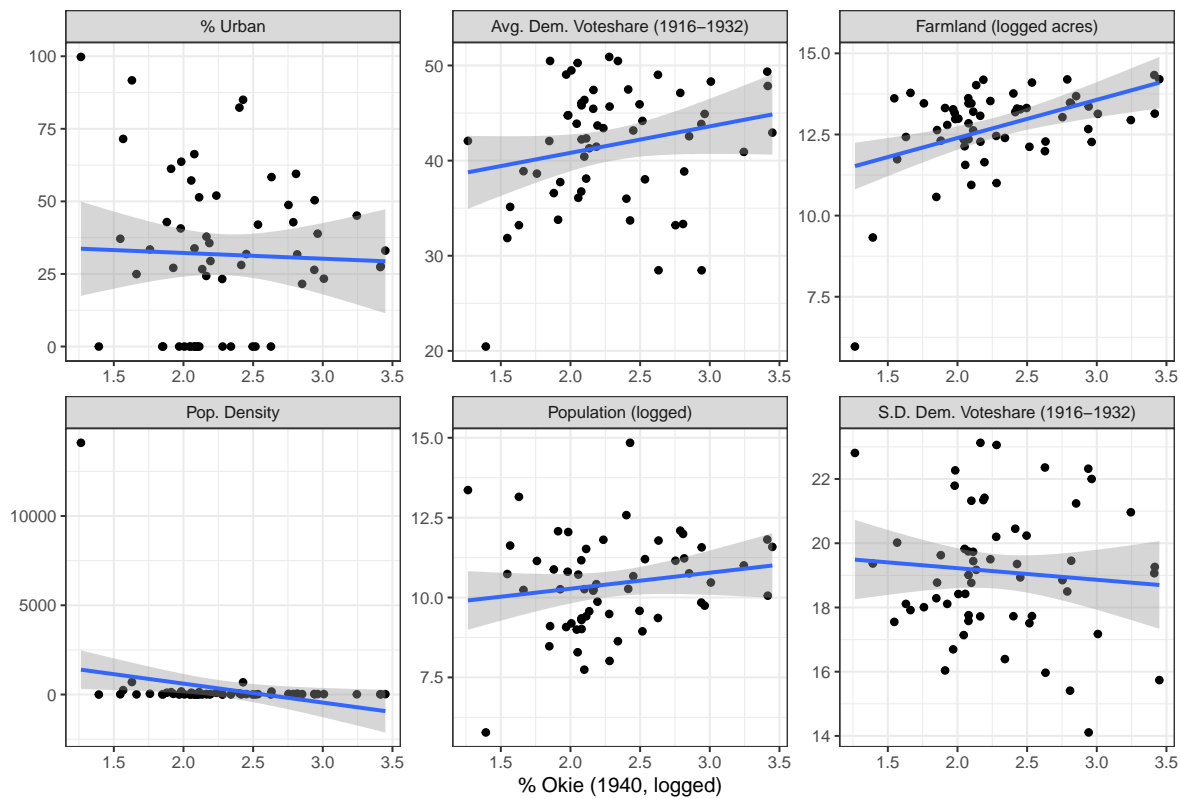
Adam J. Ramey[†]

September 2, 2021

*I would like to thank Larry Rothenberg, Gerald Gamm, John Henderson, David McDonald, Doug Ahler, Jeffrey Jensen, Andy Harris, and anonymous reviewers for helpful feedback, comments, etc. All remaining errors are my own.

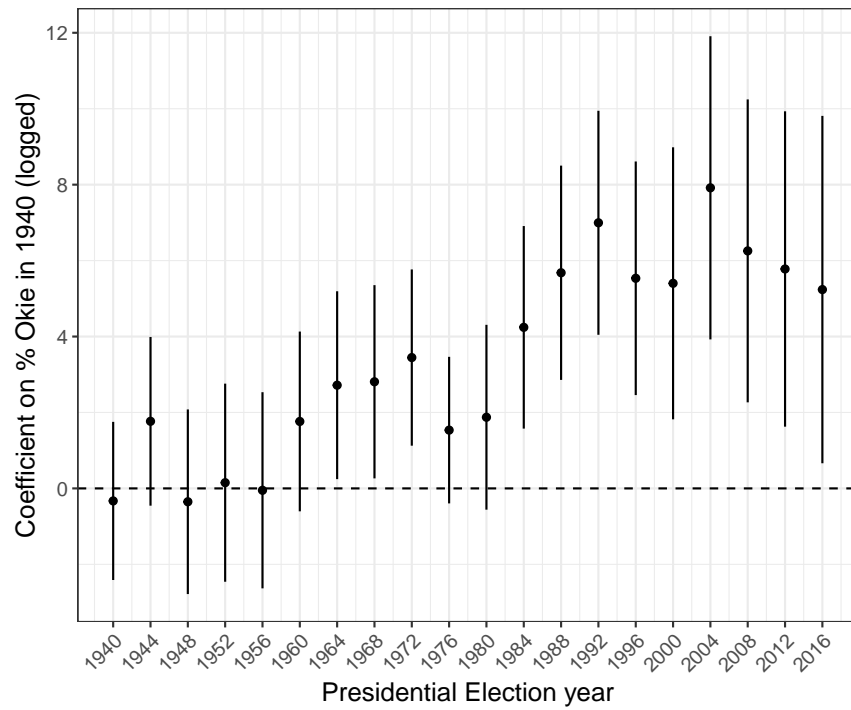
[†]Associate Professor of Political Science, Division of Social Science, New York University Abu Dhabi, PO Box 129188, Abu Dhabi, United Arab Emirates. Email: adam.ramey@nyu.edu

Figure A-1: Okie Share by County vs. Controls, 1940



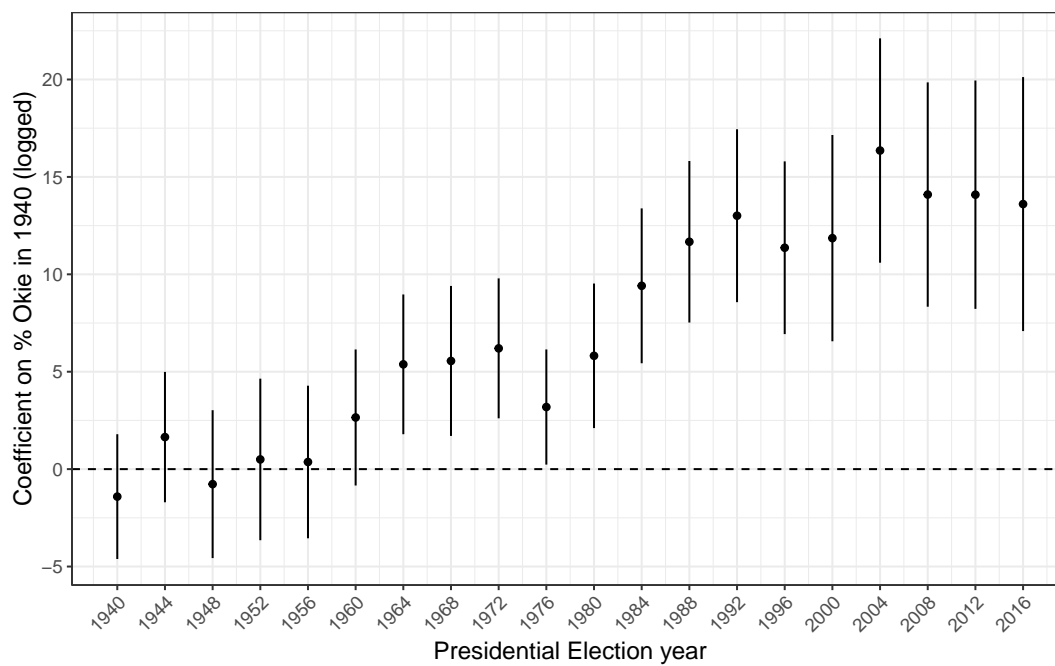
Note: Points are values of relevant variables at the county level as of 1940. Linear trends with 95% confidence intervals are shown.

Figure A-2: Coefficient on % Okie by Year (Oklahomans Only)



Note: Points are OLS Estimates with robust 95% confidence intervals portrayed as whiskers.

Figure A-3: Coefficient on % Okie by Year (Covariate-Balanced Propensity Scores)



Note: Points are OLS Estimates with robust 95% confidence intervals portrayed as whiskers. Estimates are generated using the Covariate-Balanced Propensity Score (CBPS) technique described in the main text (?).