

Online Appendix

Damming the West: Sectionalism, Logrolling, and the Passage of the Reclamation Act of 1902

Auxiliary Figures

Figure 8: Percent of Farmland Improved by Congressional District

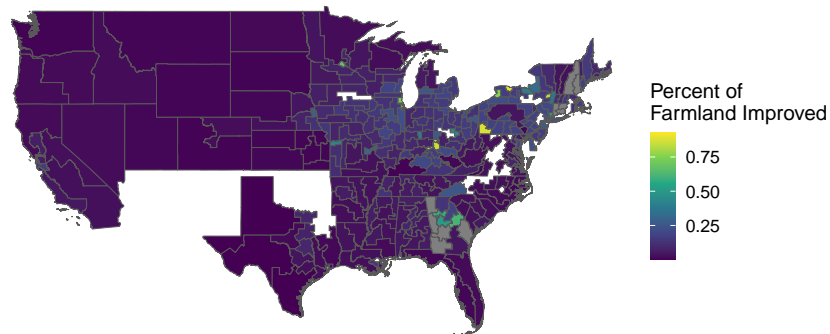


Figure 9: Bryan 1900 Vote Share, Region, and Support for the Reclamation Act

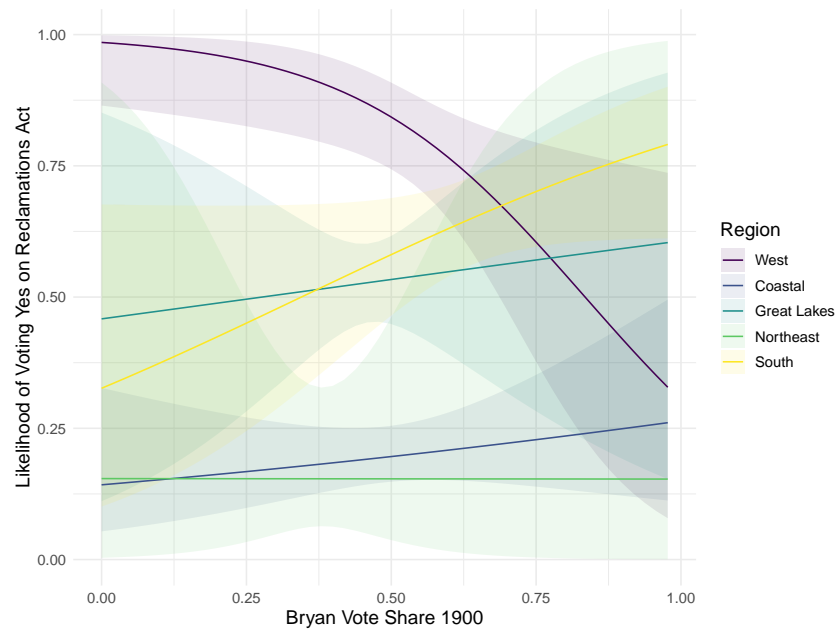


Figure 10: Local Dams Constructed by Year

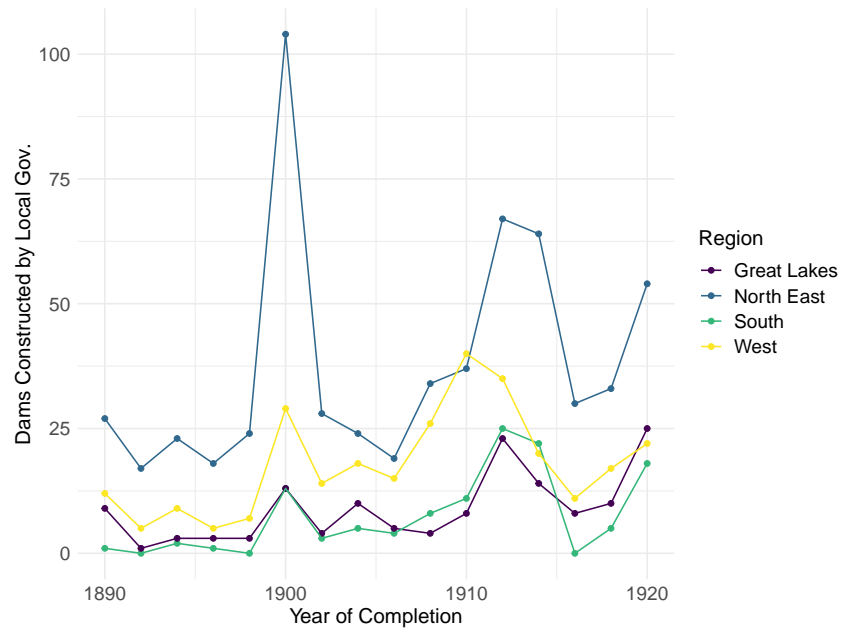


Figure 11: State Dams Constructed by Year

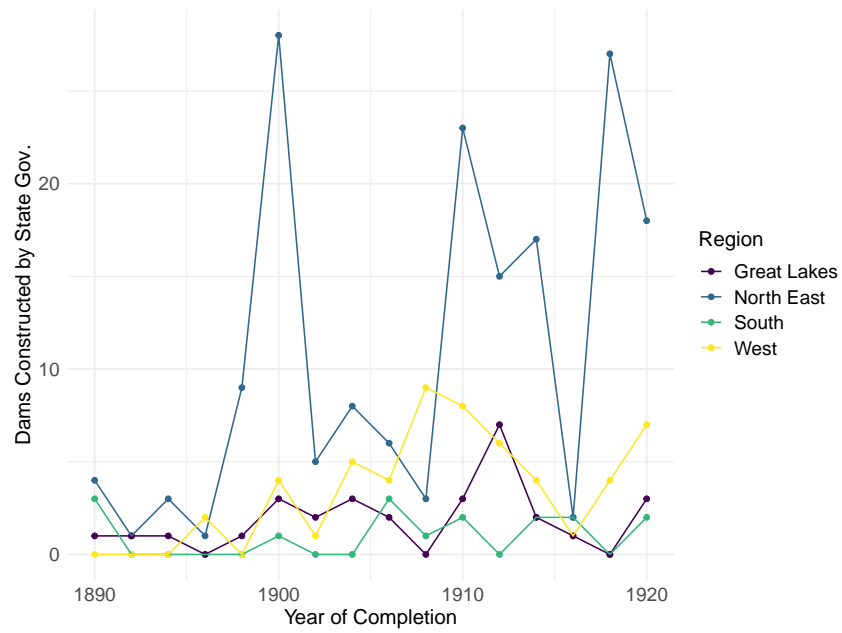


Figure 12: Voting Cohesion by Region and Party

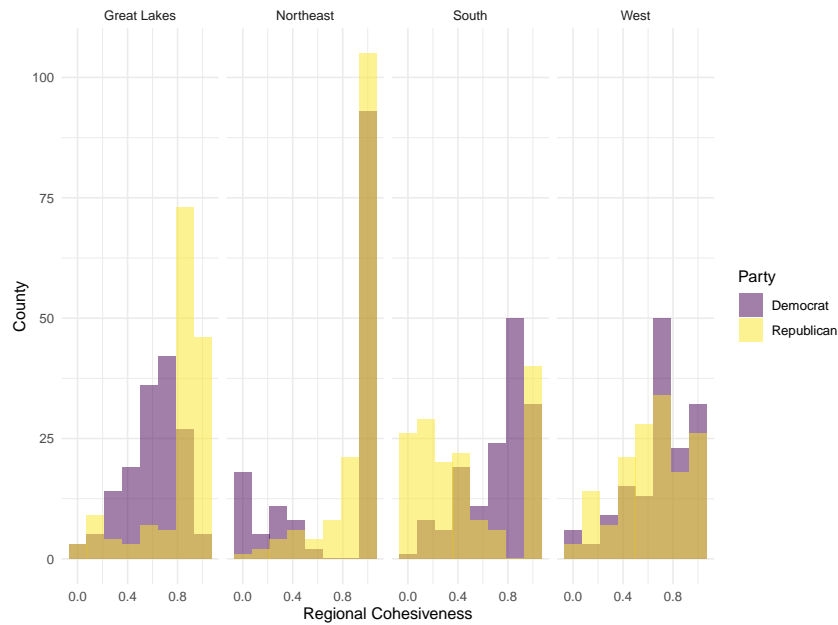


Figure 13: Regional Cohesion By Region During the 53rd-57th Congresses

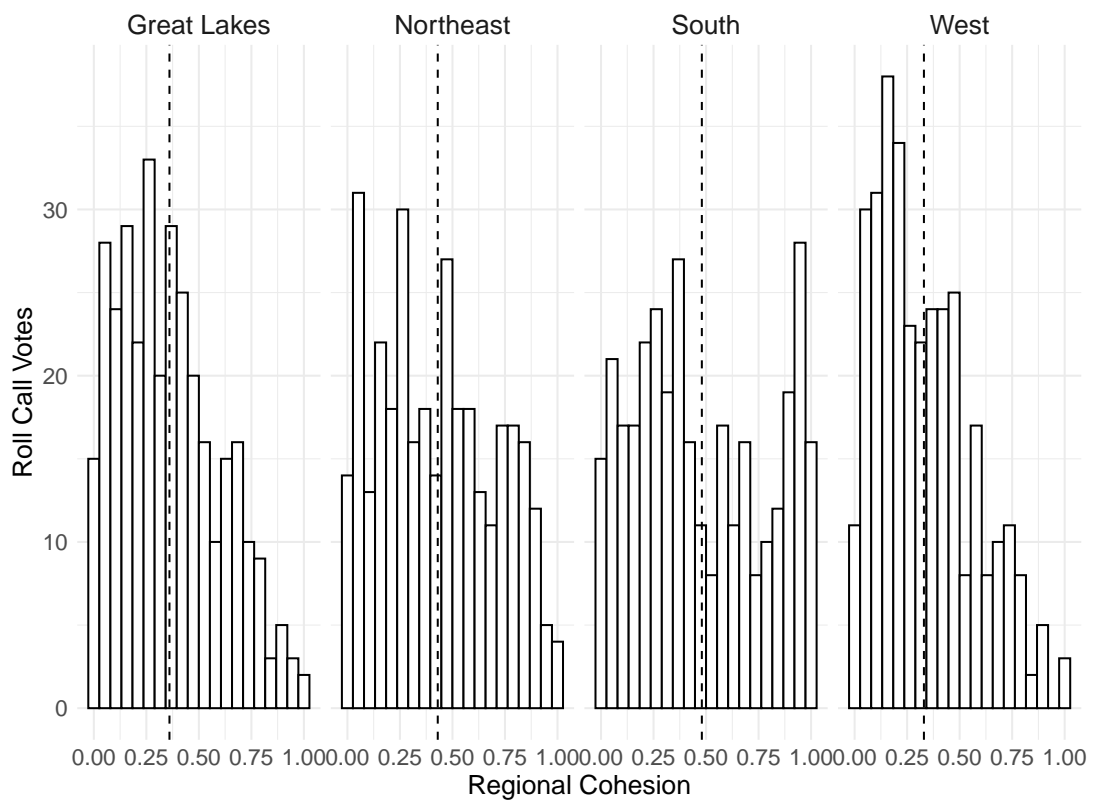


Figure 14: Support for the Reclamations Act in the Southern States

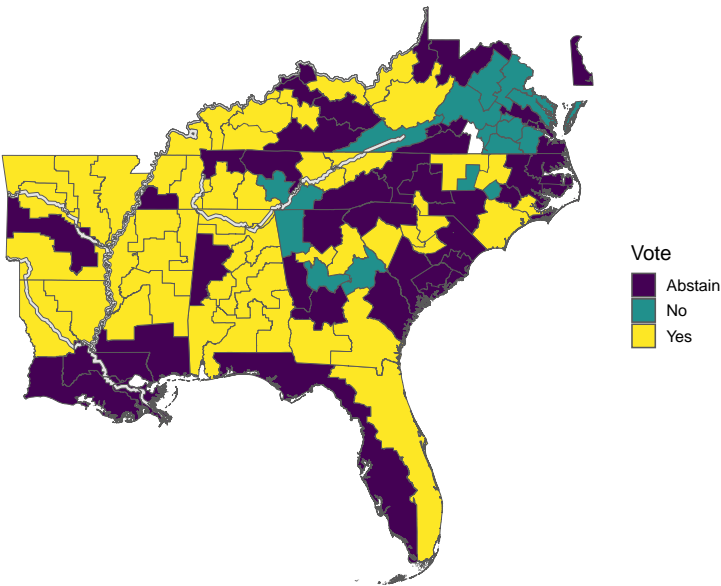
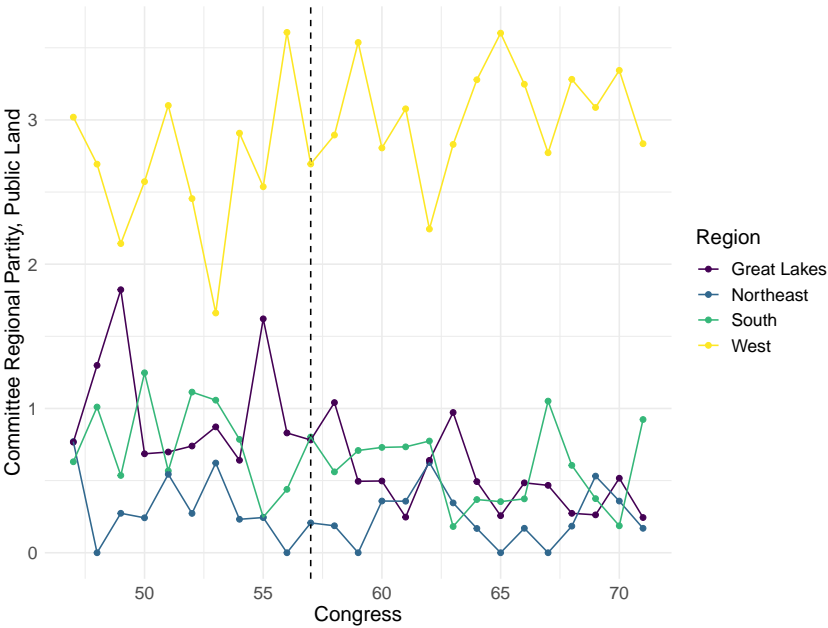


Figure 15: Committee on Public Land Regional Parity



Voting on the Newlands Reclamation Act

The Models reported in Table 1 and 2 of the manuscript include all members of Congress. The dependent variable is coded 1 for yes votes and 0 for no votes, present votes, and abstentions. The models reported in this Appendix exclude abstentions and present votes. The findings are substantively similar, though an important difference is that Western members also excluded due to a complete lack of variation within the region in the dependent variable (all Westerners voted yes, abstained, or voted present.)

Table 6: Economic Interests and Voting on Newlands Reclamation Act, Excluding Abstentions

	<i>Dependent variable:</i>				
	Voted Yes				
	(1)	(2)	(3)	(4)	(5)
Great Lakes	0.92* (0.47)				1.15 (0.74)
Northeast	-0.41 (0.76)				-2.59 (2.01)
South	1.51*** (0.54)				0.54 (0.71)
Major River Indicator		1.76*** (0.44)			1.66*** (0.54)
Irrigation Dams		-0.02 (0.59)			-0.63 (0.66)
Federal Dams		-0.15 (0.44)			-0.43 (0.47)
Local Dams		-0.03 (0.15)			-0.02 (0.22)
State Dams		0.46 (0.44)			0.75 (0.55)
Dist. Manufacturing Taxes			24.89* (14.78)	13.69 (11.89)	18.56 (13.66)
Farms Per Cap.			4.32*** (1.25)	3.48*** (1.23)	3.00** (1.53)
Dist. Improved Acreage				-1.96** (0.88)	-3.78*** (1.31)
Constant	0.18 (0.35)	0.07 (0.27)	-1.83** (0.84)	-0.08 (1.06)	-0.10 (1.24)
Observations	139	139	139	139	139
Log Likelihood	-77.61	-73.76	-75.89	-73.27	-58.85
Akaike Inf. Crit.	163.22	159.52	157.78	154.54	141.71

Note:

*p<0.1; **p<0.05; ***p<0.01

Table 7: Distributive Politics, Ideology, and Voting on Newlands Reclamation Act, Excluding Abstentions

	<i>Dependent variable:</i>					
	Voted Yes					
	(1)	(2)	(3)	(4)	(5)	(6)
Rep. Vote Share	−4.03*** (1.50)				−2.42 (4.17)	−2.77 (4.60)
William J. Bryan Vote		3.40** (1.40)			−2.42 (4.69)	−1.32 (5.51)
Public Land Com.			16.81 (1,769.26)		16.46 (1,650.56)	15.68 (2,844.40)
Rivers and Harbors Com.			16.81 (1,615.10)		16.91 (1,552.39)	16.69 (2,356.82)
Ways and Means			0.85 (1.11)		0.40 (1.21)	−0.78 (1.28)
Nokken Poole Dim 1				−1.68*** (0.47)	−1.90** (0.80)	−0.74 (0.97)
Nokken Poole Dim 2				0.37 (0.48)	0.30 (0.54)	0.34 (0.69)
Great Lakes						0.78 (0.78)
Northeast						−1.04 (1.18)
South						0.001 (0.86)
Major River						1.77*** (0.59)
Manufacturing Per Capita						15.25 (12.90)
Farms Per Capita						1.40 (1.73)
Improved Acreage						−3.21** (1.47)
Constant	2.93*** (0.80)	−0.82 (0.71)	0.76*** (0.19)	1.03*** (0.22)	3.38 (4.20)	2.82 (4.80)
Observations	129	138	139	139	129	129
Log Likelihood	−71.55	−79.61	−79.15	−75.63	−63.12	−51.86
Akaike Inf. Crit.	147.09	163.23	166.30	157.26	142.24	133.72

Note:

*p<0.1; **p<0.05; ***p<0.01